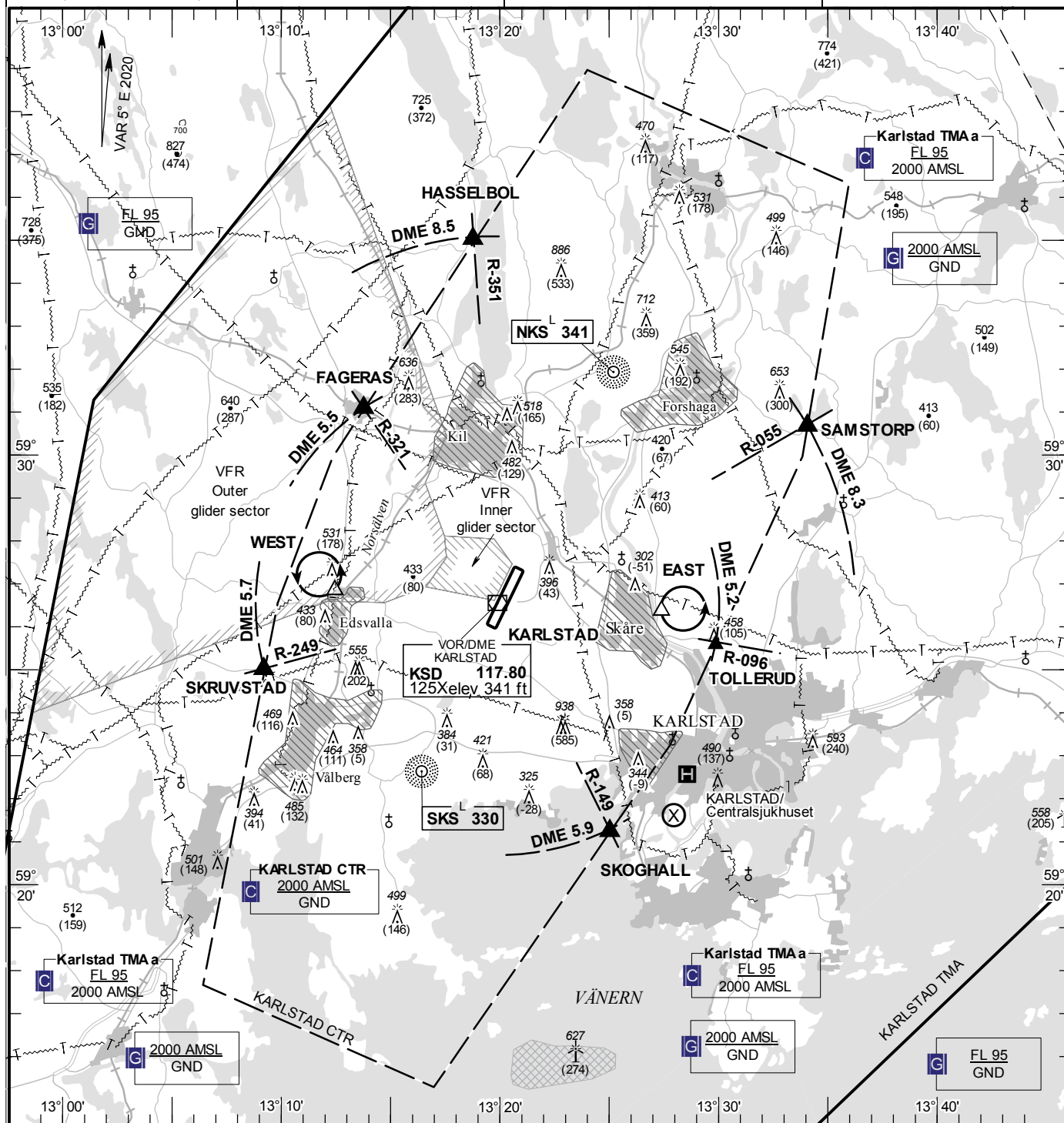


TA 5000 AMSL

AD 2 ESOK 9-1

**KARLSTAD
SWEDEN**



- 1 SQUAWK 7600
- 2 Enter CTR via FAGERAS – Holding WEST at or below 1000 ft AMSL to traffic circuit. Transmit blind your intentions.
- 3 Flash LDG-lights and watch TWR for optical signals.

Note: Noise sensitive areas should be avoided below 2500 ft AMSL.

RWY NR	THR ELEV	PAPI (MEHT)
03	333.0 ft	Left/3.00° (57 ft)
21	352.7 ft	Left/3.00° (57 ft)

Legend
See GEN 2.3

FAGERAS	593105N 0131346E
SAMSTORP	593040N 0133404E
TOLLERUD	592535N 0132952E
SKOGHALL	592114N 0132502E
SKRUVSTAD	592500N 0130912E
HASSELBOL	593501N 0131846E

EAST: Hold east of Skåre, east of point
592622N 0132724E

WEST: Hold north of Edsvalla and west of
Norsälven, north west of point
592650N 0131227E

Inner glider sector: 592728N 0132034E - 592637N 0131945E - 592656N 0131637E -
592737N 0131733E - 592807N 0131728E - 592803N 0131944E -
592728N 0132034E

Outer glider sector: 593808N 0131214E - 593027N 0131733E - 592921N 0131635E -
592807N 0131728E - 592737N 0131733E - 592656N 0131637E -
592634N 0131444E - 592636N 0131208E - 592400N 0125837E -
593117N 0130125E - 593808N 0131214E

LFV

CHANGE: Editorial

AIRAC AIP AMDT 3/2025 **12 JUN 2025**